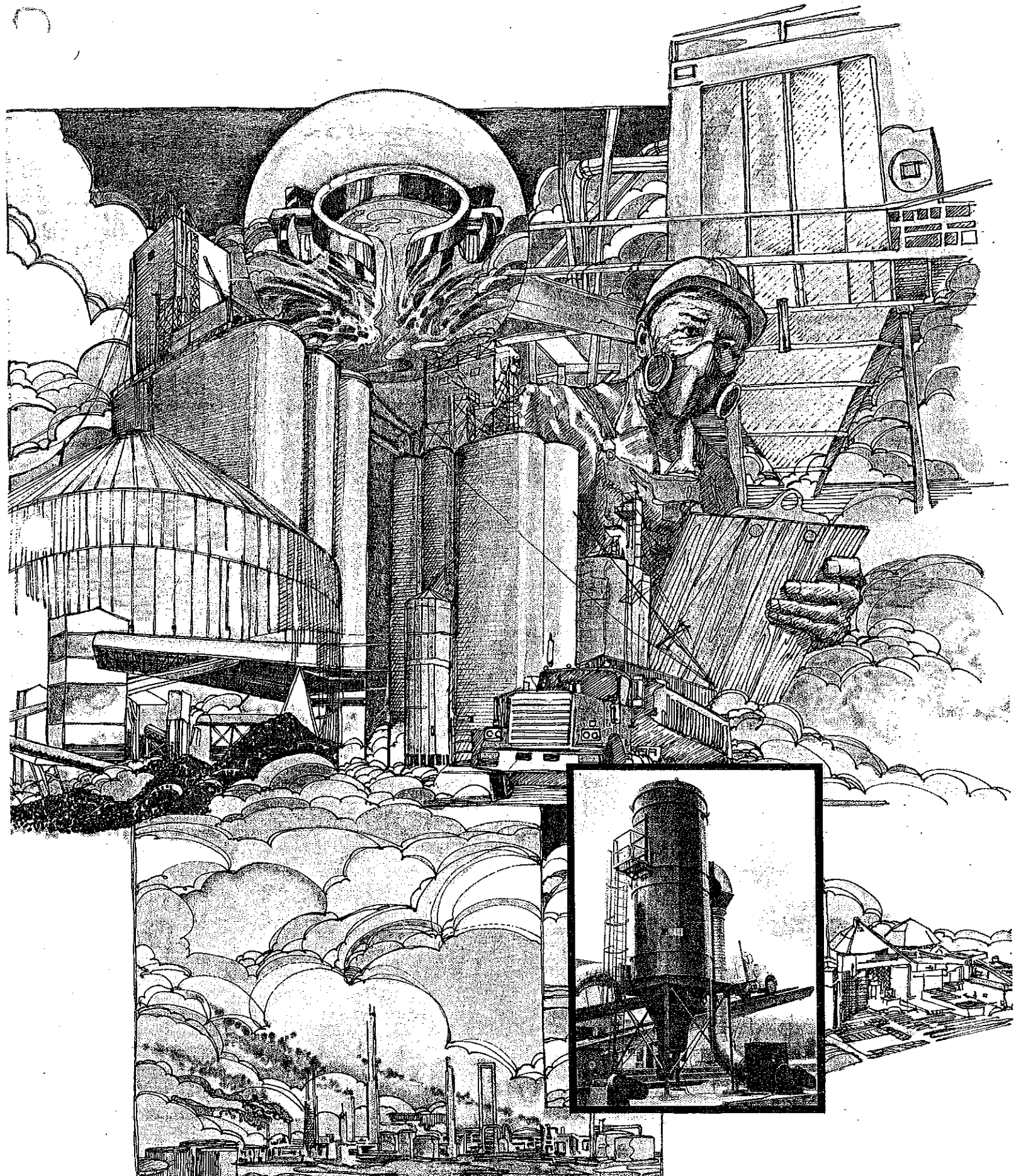


solutions to dust control problems

Rolfes RA Reverse Air Dust Collectors



Reverse Air Dust Collector with High Removal Efficiency

Combines the latest in
dust collector technology.
You get 99% or better
dust removal efficiencies
in one economical package.

Rolfes RA — Reverse Air Dust Collectors — help beat your toughest dust control problems economically and effectively. They're available in a wide range of sizes and selection of filter media to meet your requirements.

Our reverse air collectors are effective as a primary dust collector in meeting current standards for particulate removal. Regardless of your specific application, Rolfes engineers can design and install the system to meet your needs. They're ideally suited to a wide range of applications including: grain storage and handling, chemical processing, metals/mining, construction materials, food processing and more.

With the RA Collector, your dusty air enters the contoured involute where its cyclonic effect first removes heavier particulate ahead of bags. Efficient reverse air fan and distributor arrangement gives each bag a burst of air once a minute while cake is deposited into hopper.

Rolfes value-added features

Rolfes RA Dust Collectors are designed for easy access and servicing internal parts. Convenient walk-in plenum helps your workers perform routine maintenance on fan and reverse air distributor mechanism. Bag and cage removal is also made easy by simple clamping arrangement from inside the plenum. Direct-driven fan has spark-proof aluminum wheel and comes with Class II Group G explosion-proof motor. Rotating distributor is also powered by 3/4 horsepower, explosion-proof motor.

Other important standard features include:

- Rolfes modular design aids installation and servicing.
- Comes with support legs, access ladder and platform.
- Discharge auger prevents bridging in hopper.
- Magnehelic gauge helps monitor performance.
- Standard 12 ounce polyester bags supplied, or optional 16 ounce polyester, Teflon, Nomex or other materials to suit special applications.

Reverse air fan

Walk-in clean air plenum

Rotating distributor

Clean air outlet

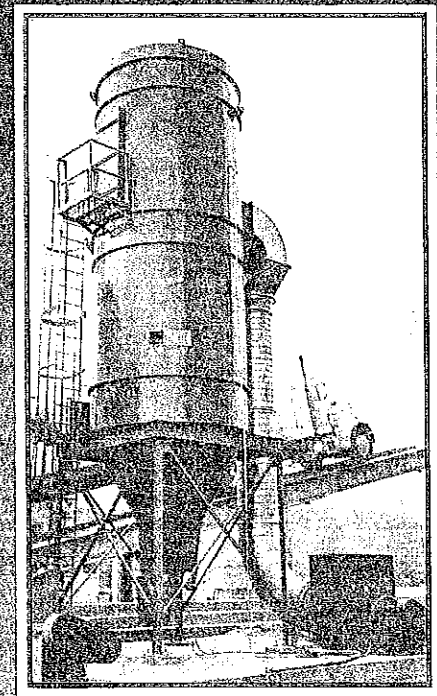
Filter bags

360 Degree particle deflector

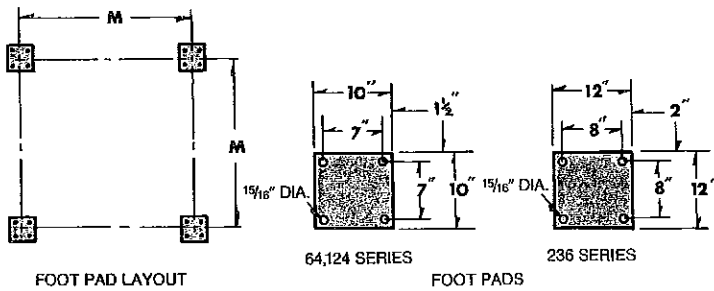
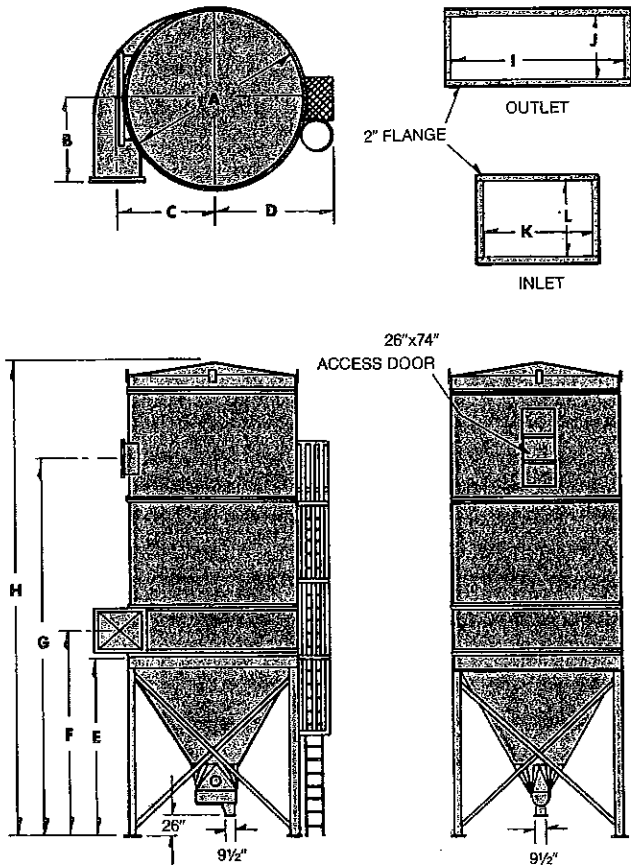
Invalute inlet

Rotary Valve

Air discharge



RA Dimensions & Outline Drawing



"RA" FILTER DIMENSIONS

MODEL	A	B	C	D	E	F	G	H	I	J	K	L	M
64RA6	7'-2"	3'-7"	4'-2"	6'-2"	9'-3 3/4"	10'-7 7/8"	20'-3 3/4"	26'-9 3/4"	3'-6"	1'-8 3/4"	2'-2 1/4"	1'-10 1/4"	6'-8 13/16"
64RA8	7'-2"	3'-7"	4'-2"	6'-2"	9'-3 3/4"	10'-7 7/8"	22'-3 3/4"	28'-9 3/4"	3'-6"	1'-8 3/4"	2'-2 1/4"	1'-10 1/4"	6'-8 13/16"
64RA10	7'-2"	3'-7"	4'-2"	6'-2"	9'-3 3/4"	10'-7 7/8"	24'-3 3/4"	32'-9 3/4"	3'-6"	1'-8 3/4"	2'-2 1/4"	1'-10 1/4"	6'-8 13/16"
124RA6	9'-3"	4'-7 1/2"	5'-2 1/2"	7'-2 1/2"	11'-2 1/2"	12'-6 1/2"	22'-5 3/4"	29'-6"	4'-11"	1'-8 3/4"	2'-2 1/4"	2'-2 1/4"	8'-9 13/16"
124RA8	9'-3"	4'-7 1/2"	5'-2 1/2"	7'-2 1/2"	11'-2 1/2"	12'-6 1/2"	24'-5 3/4"	31'-6"	4'-11"	1'-8 3/4"	2'-10 1/4"	2'-2 1/4"	8'-9 13/16"
124RA10	9'-3"	4'-7 1/2"	5'-2 1/2"	7'-2 1/2"	11'-2 1/2"	12'-6 1/2"	26'-5 3/4"	35'-6"	4'-11"	1'-8 3/4"	2'-10 1/4"	2'-2 1/4"	8'-9 13/16"
236RA6	12'-6"	6'-3"	6'-10"	8'-10"	14'-0"	15'-10 1/2"	26'-5 1/2"	33'-1 1/2"	6'-8 3/4"	2'-6 1/4"	4'-2 1/4"	3'-0 1/4"	12'-4"
236RA8	12'-6"	6'-3"	6'-10"	8'-10"	14'-0"	15'-10 1/2"	28'-5 1/2"	35'-1 1/2"	6'-8 3/4"	2'-6 1/4"	4'-2 1/4"	3'-0 1/4"	12'-4"
236RA10	12'-6"	6'-3"	6'-10"	8'-10"	14'-0"	15'-10 1/2"	30'-5 1/2"	39'-1 1/2"	6'-8 3/4"	2'-6 1/4"	4'-2 1/4"	3'-0 1/4"	12'-4"

"RA" FILTER DATA

MODEL	NO. BAGS	BAG LENGTH	CLOTH AREA SQ. FT.	REVERSE AIR FAN H.P.	DIST. ARM H.P.	ROTARY VALVE	R. VALVE H.P.
64RA6	64	72"	616	7 1/2	3/4	10"x10"	1
64RA8	64	96"	621	7 1/2	3/4	10"x10"	1
64RA10	64	120"	1027	7 1/2	3/4	10"x10"	1
124RA6	124	72"	1194	10	3/4	10"x10"	1
124RA8	124	96"	1591	10	3/4	10"x10"	1
124RA10	124	120"	1989	10	3/4	10"x10"	1
236RA6	236	72"	2272	15	3/4	10"x10"	1
236RA8	236	96"	3029	15	3/4	10"x10"	1
236RA10	236	120"	3785	15	3/4	10"x10"	1

PRINTED IN U.S.A.

Give your dust problems to Rolfes

Rolfes dust control experts give you full service capability from design through startup. We start each job with a detailed survey and preparation of shop drawings then manufacture all components and fabricated assemblies in our plants. Rolfes installation crews complete field erection and checkour. We maintain full responsibility for system integrity and performance.

Other cost-saving options

With Rolfes assistance and your crew, you can fully install your complete reverse air system. Under this plan, we'll design and manufacture your complete system and ship it to your job site. After you've completed the installation, we'll be on hand for startup and training.

Still another option available to certain users is complete system manufacture according to your plans and specifications. Once installed, we'll provide startup and operator training as required.

For more detailed information on Rolfes dust collection systems, contact us directly . . .



GEORGE A. ROLFES COMPANY
 AERATION • TEMPERATURE DETECTION • DUST CONTROL • NOISE CONTROL
 P.O. BOX 458 BOONE, IOWA 50036 PHONE (515) 432-3300 TWX 910/520-2431