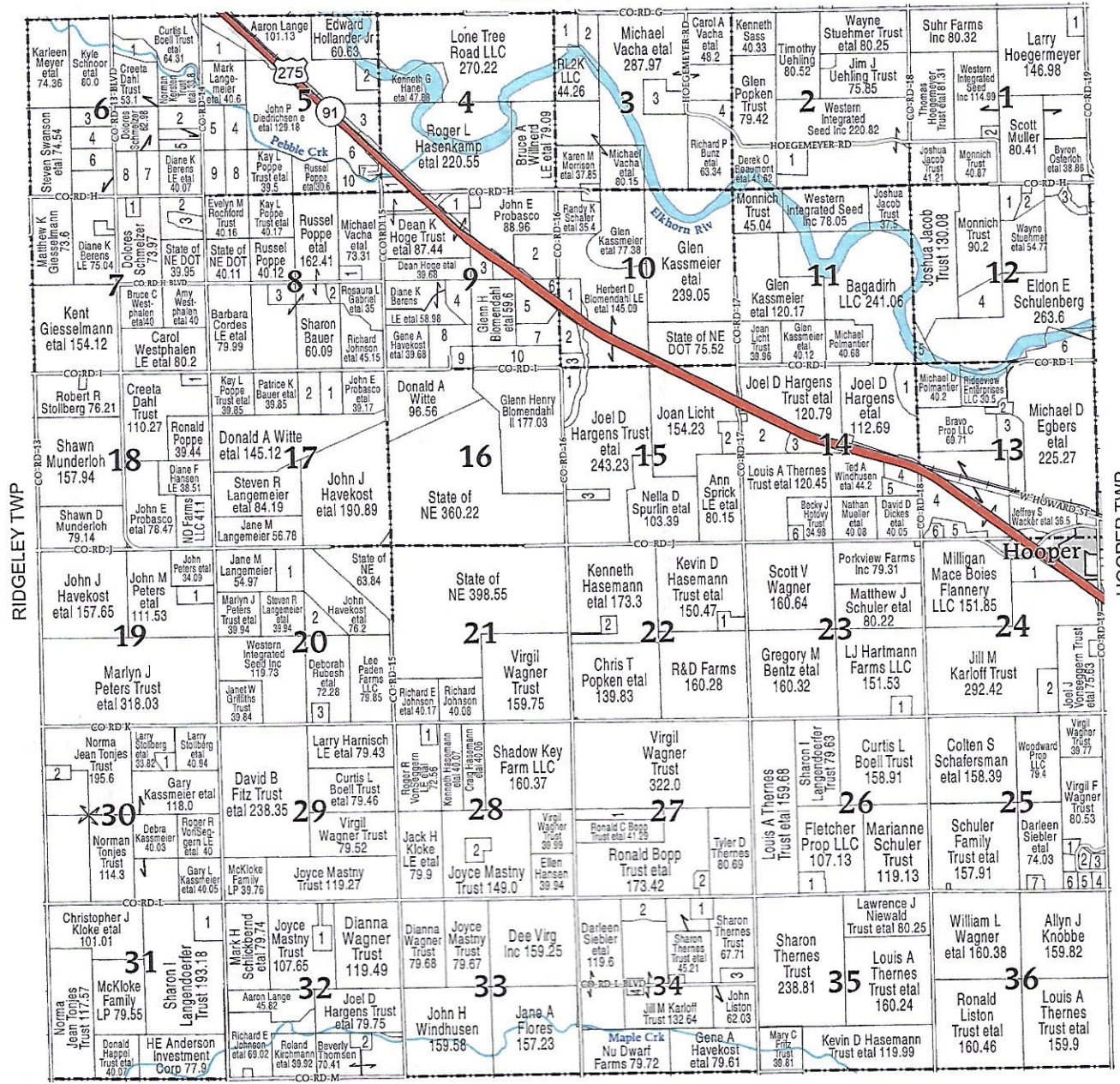


(Landowners)
CUMING TWP



EVERETT TOWNSHIP

SECTION 1	
1 SCHOLE, NATHAN J ETAL	10.39
2 FREUDENBURG, GREGORY A ETAL	5.19
SECTION 2	
1 STENVERS TRUST, WADE W ETAL	19.81
SECTION 3	
1 VACHA, BRADY ETAL	16.87
2 ROBB, SHARON E	19.21
3 VACHA, MICHAEL A	26.31
4 VACHA, MICHAEL A ETAL	17.19
SECTION 4	
1 HOGUE TRUST, DEAN K ETAL	7.45
SECTION 5	
1 DAHL TRUST, CREETA	22.2
2 WINBURN, LYNN W ETAL	14.62
3 LANGE, AARON ETAL	22.27
4 PETERS TRUST, MARLYN J ETAL	20.3
5 TOELLE, MORELLE C ETAL	20.32
6 DIEDRICHSEN, JOHN ETAL	20.04
7 MAHON, ELISABETH A ETAL	5.17
8 POPPE, RUSSEL ETAL	20.31
9 KERSTEN TRUST, NORMAN A ETAL	20.34
10 POPPE, RUSSELL J ETAL	19.22
SECTION 6	
1 DAHL TRUST, JOANN	16.05
2 KERSTEN TRUST, LOHA ANN ETAL	20.03

3 JOHNSON TRUST, ROBERT A ETAL	17
4 CITY OF SCRIBNER	10
5 SWANSON, MICHAEL ETAL	20.01
6 PETERS TRUST, MARLYN J ETAL	20
7 HOGUE, KURT J	20.01
8 HOGUE, DEAN K ETAL	19.98
SECTION 7	
1 HOGUE TRUST, DEAN K ETAL	5.91
2 LECHTENBERG, KYLE P ETAL	29.39
3 HUNKE, MARK R ETAL	10.51
SECTION 8	
1 PFEFFER TRUST, LAVERN A ETAL	7.14
2 GABRIEL, ROSAURA L ETAL	5.56
3 UEHLING, LEHA K ETAL	12.52
SECTION 9	
1 HASENKAMP, ROGER L ETAL	12.57
2 BLOMENDAHLL, HERBERT D ETAL	36.78
3 HANSEN, GERALD ETAL	11.94
4 LOVE SHACK	20.39
5 HANSEN, DENNIS	24.23
6 LANGE, AARON O ETAL	5.25
7 HANSEN, GERALD	21.78
8 DIAMOND FARMS LLC	29.78
9 WITTE, DONALD A	9.93
10 BLOMENDAHLL II, GLENN HENRY	39.79
SECTION 10	
1 LANGE, AARON O ETAL	12.78
2 HANSEN, GERALD	14.02
3 HANSEN, DENNIS	6.92

SECTION 12	
1 JENSEN, ROBERT E ETAL	14.82
2 WELLMAN, EDWIN H ETAL	10.71
3 SMITH, LON M ETAL	7.12
4 SCHULENBERG TRUST, ELDON ETAL	30.1
5 BAGADIHR LLC	9.89
6 NELSON TRUST, LYMAN G ETAL	32.53
SECTION 13	
1 STUEHMER, WAYNE ETAL	10.02
2 COLHOUSER FARMS LLC	6.39
3 SWEET SELAH LLC	32.07
4 MILLIGAN MACE BOIES FLANNERY LLC	111.23
5 MILLIGAN FARMS	12.2
6 MILLIGAN, MICHAEL	5.33
SECTION 14	
1 POLMANTIER, MICHAEL D ETAL	18.7
2 PETROW, NICHOLAS C ETAL	31.93
3 THERNES TRUST, SHARON ETAL	12.18
4 MILLIGAN, CLARK S ETAL	11.99
5 SCHAUER, JAMES D	10.52
6 BRONSON, SALLY J	5.16
SECTION 15	
1 HANSEN, DENNIS	15.62
2 LICHT, SCOTT ETAL	12.96
3 HARGENS TRUST, JOEL D ETAL	10.1
SECTION 17	
1 BAUER, PAUL M	19.92
2 POPPE, RUSSEL J ETAL	19.92

SECTION 18	
1 NEWOHNER TRUST, TAMARA ETAL	8
SECTION 19	
1 BRONTE HOLDING IV LLC	14.25
SECTION 20	
1 LANGEMEIER, JANE M ETAL	25
2 HAKEVOST, JOHN J ETAL	19.95
3 STOUT, TRACY ETAL	7.56
SECTION 22	
1 NEMEC, RUDIE ETAL	9.65
2 HASEMANN, CRAIG ETAL	6.45
SECTION 23	
1 THERNES, TYLER D	8.69
SECTION 24	
1 STEBET DEV LLC	21.36
2 SCHUBERT, MATT J ETAL	19.31
SECTION 25	
1 MW SCHULER FARMS LLC	5.02
2 MILLER, ROSS W ETAL	5.07
3 ROBERTSON, PAUL M ETAL	5.31
4 DELOZIER, ROYCE A ETAL	5.76
5 DREY, KIMBERLY D ETAL	5.34
6 SCHULER TRUST, VERNON W ETAL	5.41
7 SIEMERS, ALEXANDER M ETAL	5.37
SECTION 26	
1 ANDREWS, MARVIN R	12.29

SECTION 27	
1 BOPP TRUST, RONALD C ETAL	20
2 CASSELL, LEONARD ETAL	7.22
SECTION 28	
1 LYNN, REBECCA M ETAL	7.64
2 PORK CHOP INC	10.93
SECTION 30	
1 STOLLBERG, WILLIAM ETAL	7.13
2 JOHNSON, SHAWN	7.8
SECTION 31	
1 SMALL, THOMAS J	24.36
SECTION 32	
1 DODGE, STACEY J	11.94
2 GEISLER, JOEY L ETAL	7.56
SECTION 34	
1 SCOTT, CHRISTOPHER ETAL	10.61
2 MCELMURY, SCOTT ETAL	21.8
3 BANG, JUSTIN M ETAL	11.4
4 RUETHER, GLENVILLE ETAL	5.56

